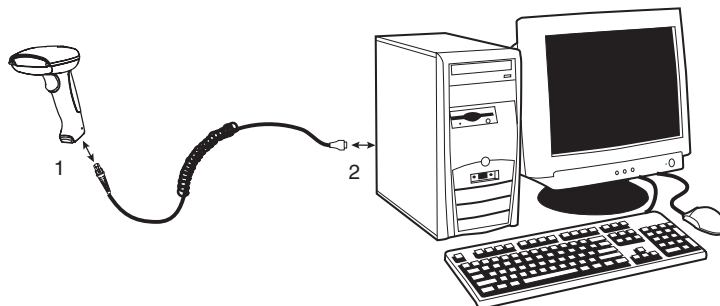


## **IMAGETEAM™ 3800 USB Programming Instructions**

### ***Connecting the Scanner - USB***

1. Turn off power to the computer.
2. Connect the cable's modular connector to the scanner.
3. Connect the USB connector to the PC.
4. Once the scanner is fully connected, power up the computer.



### ***PC Interface***

Read the bar code that describes the PC or interface you are using.



USB Keyboard (PC)



USB HID Bar Code Scanner

### ***Carriage Return***

If you want a suffix (Carriage Return, Carriage Return and Line Feed, Tab) after the bar code, scan the appropriate bar code below. If you want to remove the suffixes, scan the Remove Suffix bar code.



Add CR Suffix



Add CR, LF Suffix



Tab Suffix



Remove Suffix

### ***Factory Defaults***

The following bar code resets all factory defaults.



Factory Default

---

## ***Additional Information***

For additional information, please refer to the IT3800/3900 User's Guide available through our website at [www.handheld.com](http://www.handheld.com) or from your account representative.

## ***Product Service and Repair***

Hand Held Products provides service for all its products through service centers throughout the world. To obtain warranty or non-warranty service, return the unit to Hand Held Products (postage paid) with a copy of the dated purchase record attached. Contact the appropriate location below to obtain a Return Material Authorization number (RMA #) before returning the product.

### **North America**

Hand Held Products Corporate Offices  
Telephone: (800) 782-4263, Option 3  
Fax: (704) 566-6015  
E-mail: [naservice@handheld.com](mailto:naservice@handheld.com)

### **America Latina**

Hand Held Products America Latina  
Teléfono: (239) 263-7600  
Fax: (239) 263-9689  
E-mail: [laservice@handheld.com](mailto:laservice@handheld.com)

### **Brazil**

Hand Held Products Brazil  
Telephone: +55 (21) 2176-0250  
Fax: +55 (21) 2176-0249  
E-mail: [suporte@handheld.com](mailto:suporte@handheld.com)

### **Europe, Middle East, and Africa**

Hand Held Products Europe  
Telephone: +31 (0) 40 29 01 633  
Fax: +31 (0) 40 2901631  
E-mail: [euservice@handheld.com](mailto:euservice@handheld.com)

### **Asia Pacific**

Hand Held Products Asia/Pacific  
Telephone: +852-2511-3050  
Fax: +852-2511-3557  
E-mail: [apservice@handheld.com](mailto:apservice@handheld.com)

### **Japan**

Hand Held Products Japan  
Telephone: +81-3-5770-6312  
Fax: +81-3-5770-6313  
E-mail: [apservice@handheld.com](mailto:apservice@handheld.com)

## ***Online Product Service and Repair Assistance***

You can also access product service and repair assistance online at [www.handheld.com](http://www.handheld.com).

## ***Technical Assistance***

If you need assistance installing or troubleshooting your scanner, please call your Distributor or the nearest Hand Held Products technical support office:

### **North America/Canada:**

Telephone: (800) 782-4263, option 4 (8 a.m. to 6 p.m. EST)  
Fax number: (315) 685-4960  
E-mail: [natechsupport@handheld.com](mailto:natechsupport@handheld.com)

### **Europe, Middle East, and Africa:**

Telephone-  
European Ofc: Int+31 (0) 40 79 99 393  
U.K. Ofc: Int+44 1925 240055  
E-mail: [eutechsupport@handheld.com](mailto:eutechsupport@handheld.com)

### **Asia Pacific:**

Telephone: Int+852-3188-3485 or 2511-3050  
E-mail: [aptechsupport@handheld.com](mailto:aptechsupport@handheld.com)

### **America Latina:**

Teléfono: (704) 998-3998, opción 8  
E-mail: [latechsupport@handheld.com](mailto:latechsupport@handheld.com)

## ***Online Technical Assistance***

You can also access technical assistance online at [www.handheld.com](http://www.handheld.com).